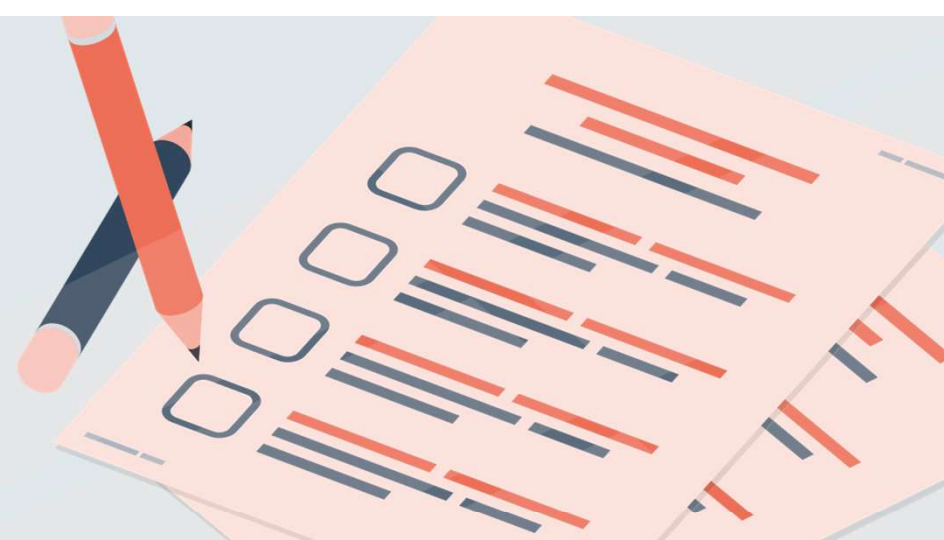


# Applying for linked data in QLD

While each application for linked data is unique, we have summarised the process into a few key steps to assist Researchers.



1

## Plan your study

Review the information about applications and datasets on the Data Linkage Queensland (DLQ) website. Discuss your project with the DLQ prior to applying.



4

## Submit to the Ethics Committee

Arrange ethics approval from a Queensland Human Research Ethics Committee (HREC) or a National Mutual Acceptance (NMA) HREC.



2

## Review the forms to complete

Complete the appropriate application and contact DLQ if you have any questions. If data linkage is required, DLQ should review your application before it is submitted to other Queensland Health Data Custodians.



5

## Public Health Act application

If you are making a Public Health Act (PHA) application, submit your PHA application approved by all relevant Data Custodians along with your ethics approval to the Public Health Act Administrator in Queensland Health (PHA@health.qld.gov.au). If requirements are met, the Queensland Health Director-General (or delegate) will issue a final approval notice.



3

## Data Custodian approval

Depending on the dataset, DLQ will seek Data Custodian approval on your behalf or advise the Data Custodian/s that you will need to contact directly. Each Data Custodian will need to review and approve the application. A list of Queensland Health Data Custodians is available via the Queensland Health Website.



6

## Notify the SSB of your approval

Send documentation of your application and ethics approvals to DLQ and any other Data Custodians who need to action your request. Upon receipt of final approval and any required datasets, the Statistical Services Branch (SSB) will queue your request for data linkage.